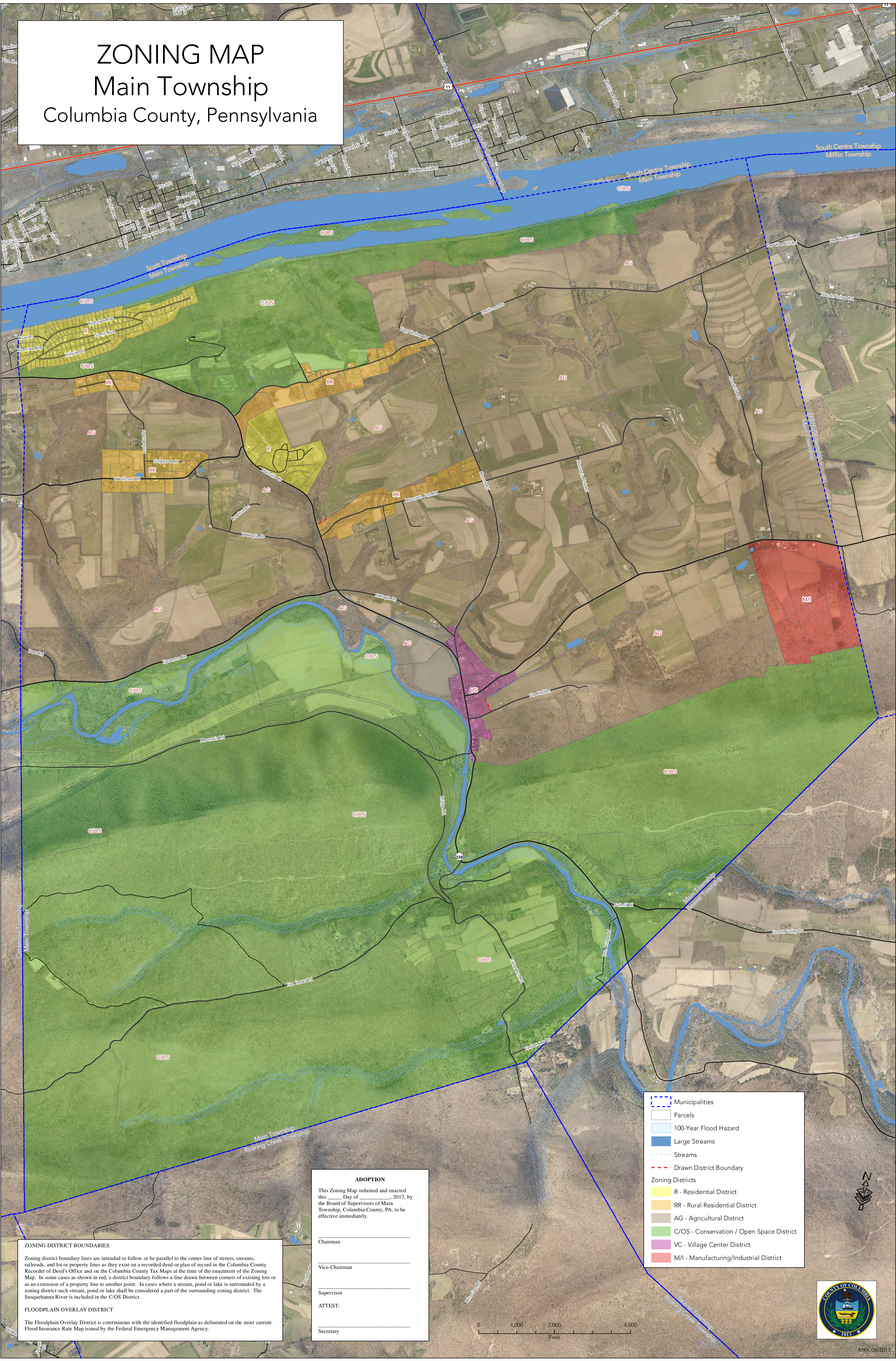


ZONING MAP

Main Township

Columbia County, Pennsylvania



ZONING DISTRICT BOUNDARIES

Zoning district boundary lines are intended to follow or be parallel to the center line of streets, streams, railroads, and lot or property lines as they exist on a recorded deed or plan of record in the Columbia County Recorder of Deed's Office and on the Columbia County Tax Maps at the time of the enactment of the Zoning Map. In some cases as shown in red, a district boundary follows a line drawn between corners of existing lots or as an extension of a property line to another point. In cases where a stream, pond or lake is surrounded by a zoning district such stream, pond or lake shall be considered a part of the surrounding zoning district. The Susquehanna River is included in the C/OS District.

FLOODPLAIN OVERLAY DISTRICT

The Floodplain Overlay District is coterminous with the identified floodplain as delineated on the most current Flood Insurance Rate Map issued by the Federal Emergency Management Agency.

ADOPTION

This Zoning Map ordained and enacted this _____ Day of _____, 2017, by the Board of Supervisors of Main Township, Columbia County, PA, to be effective immediately.

Chairman _____

Vice-Chairman _____

Supervisor _____

ATTEST:

Secretary _____

- Municipalities
- Parcels
- 100-Year Flood Hazard
- Large Streams
- Streams
- Drawn District Boundary
- Zoning Districts
 - R - Residential District
 - RR - Rural Residential District
 - AG - Agricultural District
 - C/OS - Conservation / Open Space District
 - VC - Village Center District
 - M/I - Manufacturing/Industrial District

